

NB 380

Walk-behind Scrubber

Features and Advantages

- NB380 is a mini-size walk-behind scrubber machine, equipped with brush-less brush motor and vacuum motor, low noise, high efficiency, energy saving, longer life-time, and low maintenance cost.
- Compact size with washing width 380mm, easy to work in narrow areas.
- Low energy consumption control system, one full charge can keep machine running 1.5~2 hours with standard 24V32AH lead-acid battery.
- Intelligent waterproof control panel, one button start, water volume can be adjusted, user-friendly design for easy operation.
- Products can be used in warehouses, shopping malls, workshops and other places, with a wide range of application scenarios.
- Aluminum die-casting squeegee frame, good rust prevention and the best water suction performance.
- Water skirt effectively prevents sewage splashing and controls clean areas.
- Clean water tank separation, cleaning and maintenance more convenient.
- Tool-free disassembly design for whole squeegee system, easy for changing the squeegee blade.
- Foldable handle design for less storage space.

It's never too early for sustainability



More cleaning quality for the smallest floor surfaces!



The buckle -type brush is replaced with simple and convenient; the front skirt brush design to prevent the brush of the brushing out of water; the V -type squeegee design to avoid sewage overflow.



Integrated waterproof touch panel design,easy and fast operation.



Low energy consumption control system, one full charge can keep machine running 1.5~2 hours with standard 24V32AH lead-acid battery.



Foldable handle design for less storage space.

The basis for cleanliness

The new NOBLELIFT NB380 combines high perfor-mance with ease of use in a compact design. With a working width of 380mm, floors can be cleaned quickly, efficiently and thoroughly with a disc brush or pad. Many well-thought-out details support the user in his daily work . For example, the ergonomically shaped, the good accessibilty of all cemponents facilitating daily maintenance or the cover of the solution tank filler neck, which acts as a dosing aid for cleaning chemicals.



Clean water tank separation, cleaning and maintenance more convenient.

NB380 Walk-behind Scrubber--Specifications			
Model		NB 380	
TECHNICAL DATA	Rated power	W	530
	Brush motor rated power	W	380
	Vacuum motor rated power	W	150
	Vacuum capacity	kPa	>10
	Voltage (DC)	V	24
	Sound pressure level	dB	65±3
	Dimensions (L*W*H)	mm	700*430*1200
	Brush speed	RPM	180
	Solution/ Recovery tank capacity	L	10L/10L
	Cleaning path	mm	380
	Clean productivity	m²/h	1140
	Brush/ Pad diameter	mm	380/380
	Continuous working time (12V32AH*2)	h	1.5-2h
	Battery compartment size (L*W*H)	mm	290*185*190
	Gross weight (with batteries, empty tank)	kg	58.5
	Brush disk quantity		1 Disc

Walk-behind Scrubber / Ride-on Scrubber

NB530

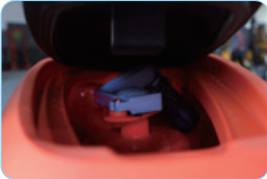
Walk-behind Scrubber

Application

NB530 Walk-behind Scrubber is a brand new self-designed walk-behind scrubber that is suitable for small-and medium-sized places with large flow of people but many small and congested areas, like shopping malls, office buildings, stations, hotels, hospitals, etc. The scrubber delivers superior cleaning results in the compact, flexible and navigating-around-obstacles design.

Features and Advantages

- A large opening on the recovery tank with detachable cap top cover provides perfect and easy access for cleaning and maintenance.
- Reliable and simple Multi-touch control panel with low maintenance cost.
- Big solution tank with filler point located at the front of the scrubber makes the water refilling fast and easy.
- The brush cover and squeegee processed by aluminum die-casting with further spraying are robust, durable and well protected against rust.
- The down pressure from the brush to the ground is designed to be adjustable, which offers versatile and flexible use to cover different floor cleaning requirements and is effective in more applications.
- Efficient mechanical noise reduction system effectively reduces equipment noise during work.
- Efficient and reliable mechanical defoaming and solution tank water-level alarm mechanism greatly improve the service life of the vacuum motor.
- One-button-start design of the motor, digital over-current and under-voltage protection integrated on the controller.
- Patented brush buckle design with longer service life can automatically load and unload the brush.



NB530 Walk-behind Scrubber–Specifications			
Model			NB 530
TECHNICAL DATA	Cleaning Path (brush diameter)	(mm)	530
	Squeegee Width	(mm)	760
	Solution tank capacity	(L)	50
	Recovery tank capacity	(L)	50
	Clean productivity	(m ² /h)	1800
	Continuous working time	(h)	3~4
	Brush motor rated power	(W)	550
	Vacuum motor rated power	(W)	400
	Drive motor rated power	(W)	-
	Traveling speed	(km/h)	-
	Sound level dB	(A)	65±3
	Battery		24V (2x12V100Ah)
	Net weight (without batteries)	(kg)	89
	Product dimensions (LxWxH)	(mm)	1220x540x1050

NR530

Ride-on Scrubber

Application

NR530 Ride-on Scrubber is a brand new self-designed mini ride-on scrubber. The compact size makes it convenient to get in and out of elevators and also ideal for cleaning in confined areas and multi-floor operations.

Features and Advantages

- Adopting front-drive chassis-free, modular patented design to make the scrubber light weight, small turning radius and flexible control;
- Big solution tank with filler point located at the front of the scrubber makes the water refilling fast and easy
- Integrated waterproof touch panel, standard LCD display and visual equipment parameters make it easy to read, simple and convenient to operate, fast and efficient to provide maintenance data;
- Three-speed modes and adjustable water flow;
- Innovative design of linear actuators supports one-button electric lifting/lowering of brush and squeegee-holder, automatic lifting of squeegee-holder for reverse driving, which is safe and efficient;
- Aluminum die-casting brush cover and squeegee, and the brush holder supports one-button automatic loading and unloading;
- A large opening on the recovery tank with detachable cap top cover provides perfect and easy access for cleaning and maintenance;
- The seat is equipped with the safety switch, and the scrubber will automatically stop when the driver leaves the seat.
- Efficient mechanical noise reduction system and ECO mode can effectively reduce equipment noise during work;
- Efficient and reliable mechanical defoaming and solution tank water-level alarm mechanism greatly improve the service life of the vacuum motor;

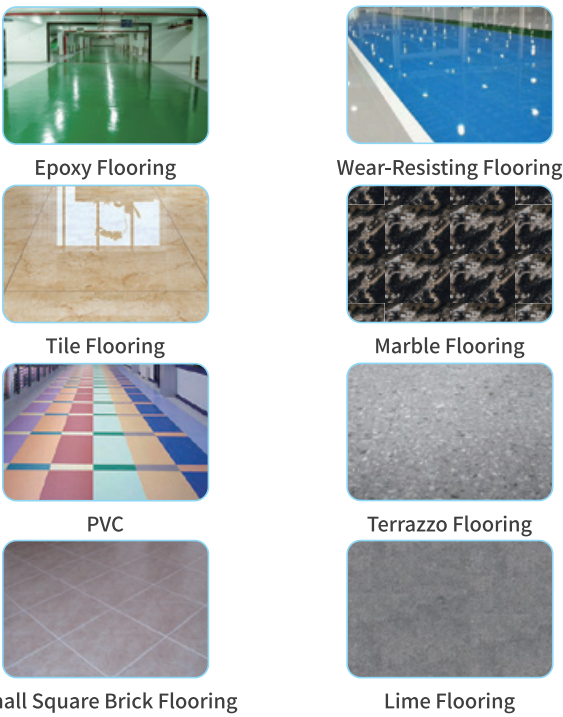


NR530 Ride-on Scrubber–Specifications			
Model			NR530
TECHNICAL DATA	Cleaning Path (brush diameter)	(mm)	530
	Squeegee Width	(mm)	780
	Solution tank capacity	(L)	70
	Recovery tank capacity	(L)	70
	Clean productivity	(m ² /h)	3100
	Continuous working time	(h)	3~4
	Brush motor rated power	(W)	550
	Vacuum motor rated power	(W)	550
	Drive motor rated power	(W)	400
	Traveling speed	(km/h)	0~6
	Sound level dB	(A)	68±3
	Battery		24V (2x12V120Ah)
	Net weight (without batteries)	(kg)	120
	Product dimensions (LxWxH)	(mm)	1260x600x1010

Industries

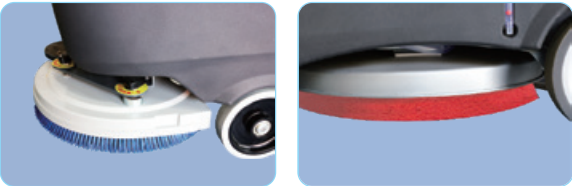


Scenarios



The recommended application of brush/ needle disc for fixing pad:

	Brush			Needle disc+pad		
	Soft brush	Nylon (Standard)	Hard brush	White	Red	Black
Concrete floor		Applicable	Applicable		Applicable	Applicable
Terrazzo floor		Applicable	Applicable		Applicable	Applicable
Tile/ Slate floor	Applicable	Applicable			Applicable	
Marble floor	Applicable	Applicable		Applicable	Applicable	
Plastic floor	Applicable			Applicable	Applicable	
Rubber floor	Applicable			Applicable		



- Notes:
1. Soft brush: for cleaning and polishing smooth surface
 2. Nylon brush: for general floor cleaning (standard configuration)
 3. Hard brush: for removing stubborn dirt on hard ground
 4. Needle disc: holding the pad, reducing the wear on the floor; the pad is used together with the needle disc. According to different conditions of the floor, we need to choose different pads in different colors (generally the deeper the color is, the greater the friction on the floor).

- Specific application of pads:
- a) White pad: for general cleaning and polishing, marble and smooth floors
 - b) Red pad: for general floor cleaning
 - c) Black pad: for removing stubborn stains on hard floors

The application of squeezer rubber strip:

	Rubber (Standard)	(PU)
Concrete floor	Applicable	Applicable
Terrazzo floor	Applicable	Applicable
Tile/ Slate floor	Applicable	
Marble floor	Applicable	
Plastic floor	Applicable	Applicable
Rubber floor	Applicable	Applicable



Note:

Polyurethane (PU) strip has strong wear resistance and oil resistance, which is suitable for oil floor conditions, but cutting and tearing performance of PU strip is poor, so it is not suitable for quadrel/ brick or tile floors.



NB530
Walk-behind Scrubber



NR530
Ride-on Scrubber

Walk-behind Scrubber
/ Ride-on Scrubber

NR810

Ride-on Scrubber

Features and Advantages

- The compact size, with low center of gravity, small turning radius and flexible operation.
- Integrated waterproof touch panel design, the LCD can display working parameters and fault code, which is easy to adjust parameters and fault diagnosis.
- Three speed modes and adjustable water flow.
- The independently developed controller has the functions of motor overload and battery low-power protection, effectively extending the life of the motor and battery.
- One touch ECO model to reduce the power and noise level for suction motor, suitable for low noise request place.
- One touch electric lifting/lowering of brush and squeegee-holder, automatic lifting of squeegee-holder for reverse driving , which is safe and efficient.
- Double brush/ pad design, innovative brush/ pad connection, the brush/ pad is easy and convenient to load or unload.
- 120 liter large capacity for solution tank and recovery tank design, effectively reduce the number of adding and releasing water. Automatic alarm for solution tank empty and recovery tank full.
- Large opening of reversible recovery tank, tool-free disassembly design, easy to clean and maintain.
- The seat is equipped with the safety switch, and the scrubber will automatically stop when the driver leaves the seat.



High performance battery
Large capacity maintenance-free lead-acid battery, safe and reliable, long working time.



Control panel
Integrated waterproof touch panel design, easy and fast operation.



Steering wheel
With steering wheel booster ball, comfortable to operate.



Charging port
External charging port, easy to charge.



Hatchback recovery tank
Tool-free disassembly design, easy to clean and maintain.



Water injection port and water level indicator
Display clear water tank water level, large opening water injection port, easy to add clear water.



Hygroscopic squeegee
Wear-resistant adhesive strip arc suction and scrape-shaped design, easy to absorb water without residue.



High-power non-slip front drive wheel
High-power anti-slip drive front wheel, ramp operation will not slope, more safe.



Industries



Scenarios



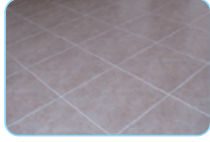
Epoxy Flooring



Tile Flooring



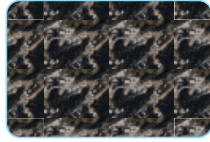
PVC



Small Square Brick Flooring



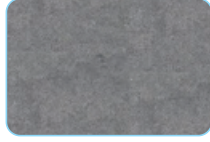
Wear-Resisting Flooring



Marble Flooring



Terrazzo Flooring



Lime Flooring

NR810 Ride-on Scrubber--Specifications

TECHNICAL DATA	Model		NR810
	Cleaning Path (brush diameter)	(mm)	810
	Squeegee Width	(mm)	2×410
	Solution tank capacity	(L)	120
	Recovery tank capacity	(L)	120
	Clean productivity	(m ² /h)	4860
	Continuous working time	(h)	4~5
	Brush motor rated power	(W)	2×380
	Vacuum motor rated power	(W)	600
	Drive motor rated power	(W)	650
	Traveling speed	(km/h)	0~6.5
	Sound level dB	(A)	68±3
	Battery		24V (4×6V200Ah)
	Battery weight	(kg)	4×33.7

Net weight (without batteries)	(kg)	330
Product dimensions	(mm)	1415×600×1010

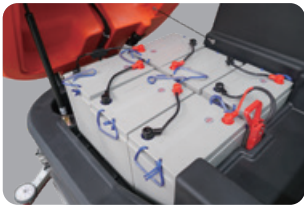


NR860P/NR1060

Ride-on Scrubber

Features and Advantages

- NR860P/NR1060 is a middle and large front-wheel drive scrubber with dual brushes.
- The garbage storage box in the recovery tank can effectively filter large garbage to avoid the blockage of the drain pipe.
- The whole vehicle adopts modular and compact design, which brings good maneuverability and flexibility.
- The low center of gravity water tank and battery design ensure the whole vehicle higher driving safety and maintenance convenience.
- Integrated waterproof touch panel design, easy for operations such as driving speed control, water flow adjustment, brush lifting/lowering.
- Large-size color LCD screen to achieve equipment parameters visible, convenient for fault diagnosis and maintenance.
- Standard electronic water level indicator for solution/recovery tanks, making level display intuitive and convenient. The recovery tank will automatically alarm and stop when it is full.
- The whole vehicle is equipped with one-button soft start of motor, over-current and under-voltage protection of controller.
- Patented disk brush adopts buckle design, achieving automatic loading and unloading of disk brush with one key.
- One touch ECO model to reduce the energy consumption and noise level, suitable for low noise request scenarios.
- 36V200Ah maintenance-free lead-acid battery ensures to work continuously for 5-6 hours on one charge.



High performance battery
Large capacity maintenance-free lead-acid battery, safe and reliable, long working time.



Control panel
Integrated waterproof touch panel design, easy and fast operation.



Steering wheel
With steering wheel booster ball, comfortable to operate.



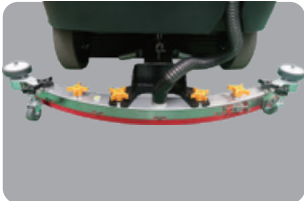
Charging port
External charging port, easy to charge.



Hatchback recovery tank
Tool-free disassembly design, easy to clean and maintain.



Water injection port and water level indicator
Display clear water tank water level, large opening water injection port, easy to add clear water.



Hygroscopic steak
Wear-resistant adhesive strip arc suction and scrape-shaped design, easy to absorb water without residue.



High-power non-slip front drive wheel
High-power anti-slip drive front wheel, ramp operation will not slope, more safe.



Long working hours



High reliability



High efficiency



Low security risk

**Save Labor and money,
for users to save a lot of
labor costs.**

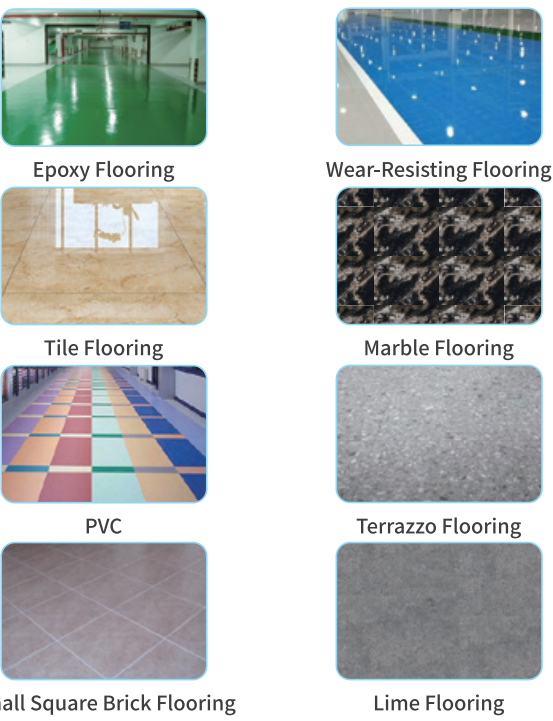


Walk-behind Scrubber
/ Ride-on Scrubber

Industries



Scenarios



The recommended application of brush/ needle disc for fixing pad:

	Brush			Needle disc+pad		
	Soft brush	Nylon (Standard)	Hard brush	White	Red	Black
Concrete floor		Applicable	Applicable		Applicable	Applicable
Terrazzo floor		Applicable	Applicable		Applicable	Applicable
Tile/ Slate floor	Applicable	Applicable			Applicable	
Marble floor	Applicable	Applicable		Applicable	Applicable	
Plastic floor	Applicable			Applicable	Applicable	
Rubber floor	Applicable			Applicable		

Notes:

- 1. Soft brush: for cleaning and polishing smooth surface
- 2. Nylon brush: for general floor cleaning (standard configuration)
- 3. Hard brush: for removing stubborn dirt on hard ground
- 4. Needle disc: holding the pad, reducing the wear on the floor; the pad is used together with the needle disc. According to different conditions of the floor, we need to choose different pads in different colors (generally the deeper the color is, the greater the friction on the floor).

Specific application of pads:

- a) White pad: for general cleaning and polishing, marble and smooth floors
- b) Red pad: for general floor cleaning
- c) Black pad: for removing stubborn stains on hard floors

The application of squeezer rubber strip:

	Rubber (Standard)	(PU)
Concrete floor	Applicable	Applicable
Terrazzo floor	Applicable	Applicable
Tile/ Slate floor	Applicable	
Marble floor	Applicable	
Plastic floor	Applicable	Applicable
Rubber floor	Applicable	Applicable

Note:

Polyurethane (PU) strip has strong wear resistance and oil resistance, which is suitable for oil floor conditions, but cutting and tearing performance of PU strip is poor, so it is not suitable for quadrel/ brick or tile floors.

NR860P-NR1060 Ride-on Scrubber--Specifications

TECHNICAL DATA	Model		NR860P	NR1060
	Cleaning width	(mm)	860	1060
	Brush/pad diameter	(mm)	2×430	2×530
	Solution tank capacity	(L)	200	200
	Recovery tank capacity	(L)	210	210
	Clean productivity	(m ² /h)	5590	6890
	Continuous working time	(h)	5~6	5~6
	Brush motor rated power	(W)	2×550	2×550
	Vacuum motor rated power	(W)	600	600
	Drive motor rated power	(W)	800	800
	Traveling speed	(km/h)	0~6.5	0~6.5
	Sound level dB	(A)	68±3	68±3
	Battery		36V (6×6V200Ah)	36V (6×6V200Ah)
	Net weight (without batteries)	(kg)	475	477
	Product dimensions	(mm)	1800×910×1350	1800×1150×1350



Walk-behind Scrubber
/Ride-on Scrubber

ANB510

AI-Powered Scrubber-dryer Robot

Superior cleaning productivity and performance

The CenoBots ANB510 provides exceptional cleaning productivity and performance, making it an excellent cleaning partner. Equipped with a 55 L/14.5 gal water tank and a 120Ah capacity battery, this scrubber can efficiently cover a larger surface area in less time. Its high pad pressure ensures comprehensive and effective cleanliness, making it a reliable cleaning solution for all types of cleaning tasks. With a full coverage productivity of 2570m²/27663ft² per hour, this scrubber is perfect for a wide range of commercial spaces, regardless of their size.



Human-like intelligent cleaning

The CenoBots ANB510 is equipped with the latest and most advanced 3D lidar technology and the most powerful AI computing chip, enabling it to achieve intelligent cleaning that is truly comparable to a human's. Furthermore, the ANB510 can operate at a distance of <5cm from the wall and adapt its mapping to the environment, allowing it to optimize its cleaning route and increase efficiency.

Hassle-free after sale service

Thanks to its strong mapping capabilities and advanced algorithms, the CenoBots ANB510 can adjust to changes in the environment without any need for human intervention. In addition, with free OTA updates, software updates can be easily performed without the need for a technician to come on-site. This convenient after-sale service ensures that the scrubber robot is always up-to-date and can provide dependable and effective cleaning solutions for its users.

Key Features

Built to last

The CenoBots ANB510 has undergone thorough testing and has been manufactured using the rotational molding process and well-trained components. As a result, it is capable of withstanding wear and tear, ensuring that it can operate reliably and durably over an extended period of time.

High level of safety

Equipped with multiple sensors and a three-dimensional, 360-degree comprehensive safety protection system, this scrubber offers a high level of safety.



Easy to maintain

The CenoBots ANB510 is easy to maintain, thanks to its automatic refill and drain water system, as well as its charge and discharge capabilities, which are accessible through the one-stop service docking station. Furthermore, its modular components and intuitive interior design make it very easy to perform maintenance and troubleshooting tasks.



Walk-behind Scrubber
/ Ride-on Scrubber

Specifications

DIMENSIONS

Length	1030mm 40.6 in
Width (w/o squeegee)	580mm 22.8 in
Height	1045mm 41.1 in
Weight	220 kg 485 lbs
Cleaning Width	510mm 20 in
Squeegee Width	740mm 29 in

CLEANING

Max. Theoretical Productivity	2570 m²/hr 27663 ft²/hr
Brush Pressure	25 kg 55.1 lbs
Disk Brush Speed	220 RPM
Clean Water Tank Capacity	55 L 14.5 gal
Waste Water Tank Capacity	55 L 14.5 gal

MOVEMENT

Max. Speed	1.4m/s 3.13 mph
Min. Distance from Wall	<50mm 2 in
Min. Passable Width	900mm 35.4 in
Gradeability	6°

POWER

Battery Type	Lithium Iron Phosphate
Battery Capacity	120 Ah
Rated Voltage	24 VDC
Charging Time	4 hours
Max. Runtime	6 hours

SENSING

3D LiDAR, 3D Depth Camera, Ultrasonic Sensor, Bumper Sensor

Sound Pressure Level

At least as 67 dB(A)

Key components for AI

Process Chip

Nvidia Xavier AI edge computing chips with up to 32 TOPS AI performance

Mapping Sensor

3D LiDAR with 150m detection range

ANS720

The World's First Real Spot-Cleaning Robot

Finally a Robot That Cleans like a Professional Cleaning Service

Introducing the world’s first Artificial Intelligence enabled autonomous floor-cleaning robot, much more effective and efficient than anything on the market today.

Capable of detecting more than 30 different types of waste and debris with a 99% accuracy, the ANS720 can reliably and intelligently perform auto spot-cleaning thereby greatly increasing cleaning efficiency by as much as a factor of 10. No other autonomous robot can match the ANS720's performance. Worry-free robotic day-time sanitary maintenance is finally possible.



Spotless Cleaning Results 100% Guaranteed

Other robots clean an area in only a single pass, regardless of whether stubborn stains and/or waste have been removed. The ANS720 is equipped with our proprietary innovative "CRC" technology [Cleaning Result Checkup] and will repeatedly clean the same area to ensure the job is completed satisfactorily. With the ANS720, you can be sure of a complete job well done every time, all the time.

Key Features

Garbage Detection and Classification



More than 30 different types of waste and debris can be automatically detected and classified, with 99% accuracy.

Innovative Self-Adaptive Cleaning Technology



The ANS720 can automatically adjust its area and methods of cleaning according to the amount, size and type of waste and debris it detects, offering the only cleaning robot able to cope with changing real-life scenarios without human intervention.

<5 cm Distance From the Wall



No more human intervention is required after robot cleaning. Even the debris closest to the wall can be removed by ANS720.

Superior Robot Sensing Capability



No need to manually change the internal map in the event of any changes in the environment. The ANS720 can also automatically resume from a lost location, thus assuring a perfect match to very long corridors.

Unbeatable Efficiency Turbo-powers Your ROI



The ANS720 can work on soft/hard floors and carpets, with an unbeatable cleaning efficiency of 2100m2/hr in normal cleaning mode and 20000 m2/hr in patrol cleaning mode.



Easiest RMA in the Industry

With the ANS 720 's innovative modular design and our streamlined RMA process, the ANS720 offers unsurpassed post-sales service. Distributors can expect a prompt, smooth and trouble-free RMA process, with clear error code storage, easy parts replacement, and remote support.

The Highest Level of Safety

Safety is always the top design priority for the ANS720. The ANS720 has been rigorously tested at state-of-the-art facilities. The ANS720 employs advanced Nvidia Xavier AI edge computing chips and multi-channel 3D LiDAR [used in autonomous driving vehicles], to assure that the highest standards of safety are always met.

Specifications

DIMENSIONS

Length	855 mm 33.4 in
Width	600 mm 23 in
Height	1050 mm 41 in
GVW	132 KG 291 lbs
Sweeping Width (w/ side brushes)	720 mm 28 in
Roller Brush Width	460 mm 18 in

CLEANING

Max. Theoretical Productivity (spot cleaning)	19870m²/hr 213880 ft
Max. Theoretical Productivity (regular cleaning)	1987m²/hr 21388 ft²/hr
Dust Filter Bag Capacity	18L 4.8 gal
Trash Tray Capacity	5L 1.3 gal
Max. Suction of Vacuum Motor	25 kPa

MOVEMENT

Max. Speed	1.2 m/s 2.68 mph
Min. Distance from Wall	<50mm 2 in
Min. Passable Width	800 mm 31 in
Min. Turn-around Width	1200 mm 47 in
Gradeability	6°

POWER

Battery Type	Lithium Iron Phosphate
Battery Capacity	120 Ah
Rated Voltage	24 VDC
Charging Time	4 hours
Max. Runtime (spot-cleaning)	13 hours
Max. Runtime (regular cleaning)	8 hours

SENSING

3D LiDAR, 3D Depth Camera, Ultrasonic Sensor, Bumper Sensor

Sound Pressure Level

At least as 58 dB(A)