

FTH30N-45YM 4WD
FTH25N-50YM 4WD
FTH25N-60YM 4WD

Compact Telehandler



CE CERTIFICATE



ISO 14001:2004



ISO 9001:2000



Multi-function



fixed platform



fork



4-IN-1 BUCKET



loading bucket

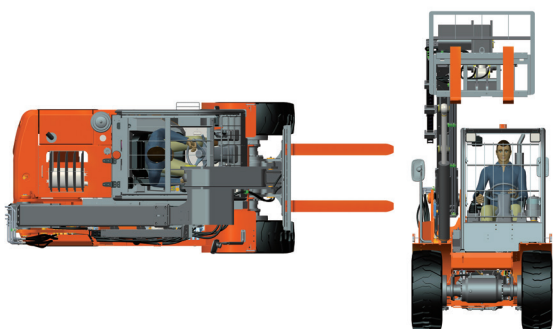


straight crane jib



- Taking advantage of rough terrain forklift platform, it is equipped with Japanese Yanmar and Korea LS EU V & EPA stage IV diesel engine, 2WD & 4WD hydraulic transmission, power train system, which has been widely recognized by market over 10 years.
- High-intensity chassis & HG70 steel boom ensure longer service life.
- Reliable hydraulic brand in China, and hoses connector adopts 24 degrees cone.
- Tri-Channel cooling system ensures good thermal equilibrium performance.

Stability & Reliability



Ergonomic

- Longer steering column, user-friendly interface with optimized operation space
- Dual rear & wide angel view mirrors enhance wide visibility.
- Isolated overhead guard helps to reduce vibration
- Full-closed front tilt cab available to install
- Suspension seat, hand brake with self-lock;





Safety

- Excellent self-leveling system with the carriage and forks tilt angle within $\pm 0.5^\circ$ ensuring the safety of goods during lifting process.
- Anti-rollover protection system improves operation safety.
- OPS function as standard set.
- Proportional solenoid valves allow high accuracy and safety.
- Cylinder equipped with balance valve, remaining the good on forks in case hydraulic hose burst occurs.



Easy maintenance

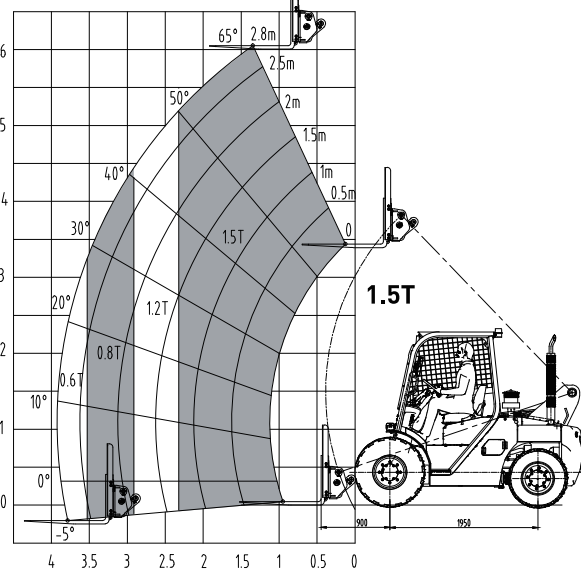
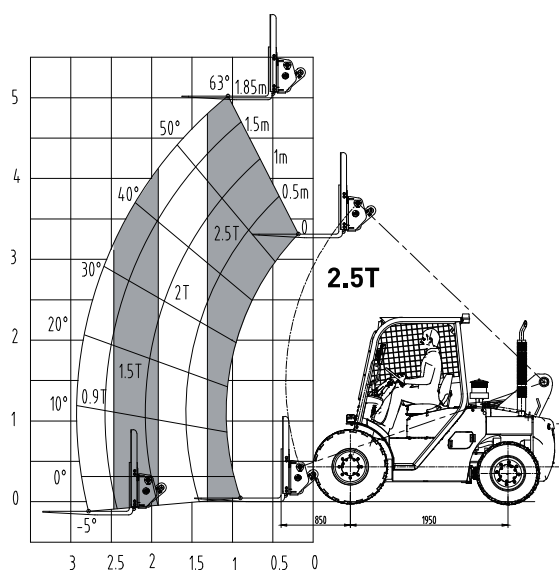
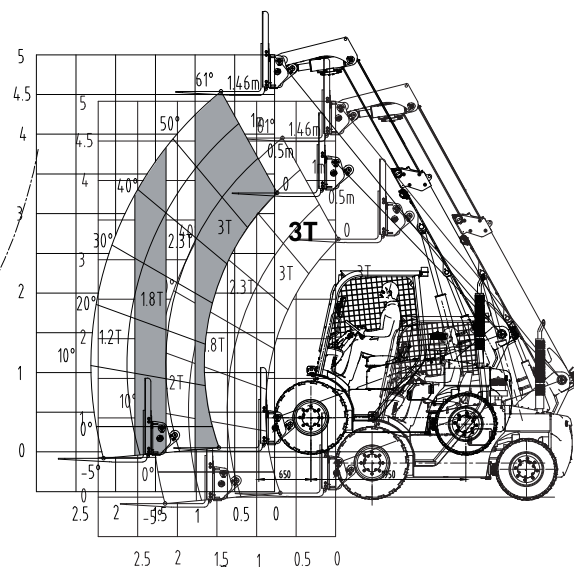
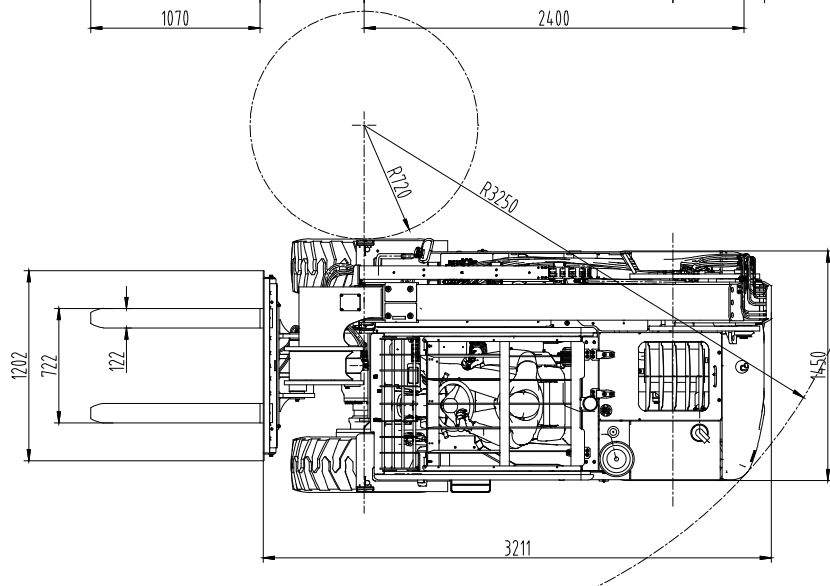
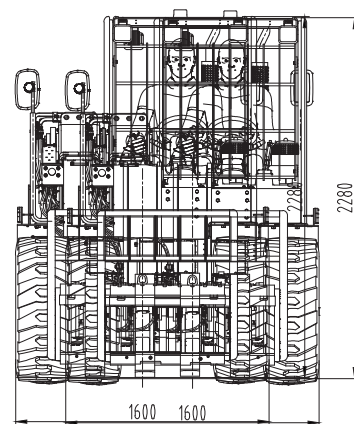
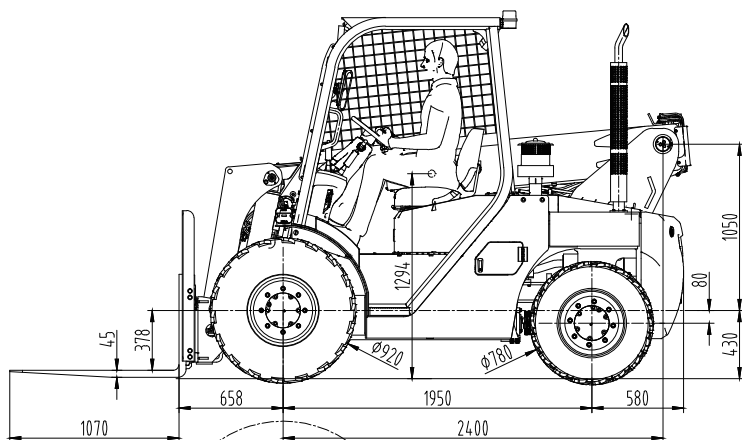
- Boom adopts easy-maintenance external towline pipe.
- Engine hoods with large open angle, and tilt cab is easier for maintenance.



Efficiency

- Main specifications meet major EU & American brand standard to ensure high work efficiency.
- small turning radius(3250mm) allows working in narrow space.
- High ground clearance capable for rough terrain work conditions.





NOBLELIFT Telescopic Handler Parameters and Design Charateristics

Characteristics

| Manufacturer | | NOBLELIFT | | |
|--------------------------------|------|-----------------|-----------------|-----------------|
| Model | | FTH30N-45YM 4WD | FTH25N-50YM 4WD | FTH25N-60YM 4WD |
| Max.Load Capacity | kg | 3000 | 2500 | 2500 |
| Lift Capacity at Maximum Reach | kg | 1200 | 900 | 600 |
| Max. Forward Reach | m | 2.3 | 2.9 | 3.9 |
| Max. Lift Height | mm | 4500 | 5000 | 6000 |
| Load Center | mm | 500 | 500 | 500 |
| Front wheel outer diameter | mm | 920 | 920 | 920 |
| Gradeability (Laden) | % | 45 | 45 | 45 |
| Max. traction | KN | 36 | 36 | 36 |
| No. of Boom Sections | n | 2 | 2 | 3 |
| Max. Travel Speed | km/h | 18 | 18 | 18 |
| Optional Attachment | | Bucket | Bucket | Bucket |
| Bucket discharge height | mm | / | 3500 | 4100 |
| Front Tire Reach | mm | 200 | 400 | 400 |
| Overall Weight | kg | 5400 | 5500 | 5600 |

Dimensions

| | | | | |
|------------------------------|----|-------------|-------------|-------------|
| Overall Length(without fork) | mm | 3300 | 3500 | 3550 |
| Overall Width | mm | 1600 | 1600 | 1600 |
| Overall Height | mm | 2280 | 2280 | 2280 |
| Wheelbase | mm | 1950 | 1950 | 1950 |
| Ground Clearance | mm | 245 | 245 | 245 |
| Front Track | mm | 1250 | 1250 | 1250 |
| Cab Width | mm | 960 | 960 | 960 |
| Outside Turning Radius | mm | 3250 | 3250 | 3250 |
| Outrigger Width (Retracted) | mm | 5500 | 5700 | 5800 |
| Fork Size | mm | 1220x122x45 | 1220x122x40 | 1220x122x40 |
| Max Fork Width | mm | 1036 | 1036 | 1036 |
| Rear Overhang | mm | 600 | 600 | 600 |

Performance

| | | | | |
|---------------------------------|------|-------|--------|--------|
| Boom pitch angle | deg | 61/-5 | 63/-5 | 65/-5 |
| Fork pith angle | deg | 12/74 | 30/100 | 30/100 |
| Boom lift speed | s | 8 | 8 | 9 |
| Boom down speed | s | 6 | 6 | 6 |
| Boom extension speed | s | 7 | 8 | 7 |
| Boom retraction speed | s | 5 | 6 | 5 |
| Fork tilt speed | s | 4 | 5 | 5 |
| Fork retraction speed | s | 2.5 | 3.3 | 3.3 |
| Indoor noise | dB | 95 | 95 | 95 |
| outdoor noise | dB | 102 | 102 | 102 |
| Lifting speed (Laden/ Unladed) | mm/s | 450 | 450 | 450 |
| Lowering speed (Laden/ Unladed) | mm/s | 540 | 540 | 540 |



Model: 4TNE98(EU/III/EP/III)
Rated Output: 42.1/2300kw/r.p.m
Rated Torque: 196.3/1700N.m/r.p.m
No. of cylinder: 4
Bore*Stroke: 98×110mm
Displacement: 3.318L



Model: L4CRTV4(EuV+Tier 4)
Rated Output: 42/2300kw/r.p.m
Rated Torque: 208/1600N.m/r.p.m
No. of cylinder: 4
Bore*Stroke: 88×103mm
Displacement: 2505cc